

ラフォーレ琵琶湖 LAFORET BIWAKO



Backed by the panorama of the expansive the Lake Biwa the biggest lake in Japan, the layout of our hotel ensures that all guests can feel the extraordinary experience.

ラフォーレ琵琶湖 LAFORET BIWAKO

GUEST ROOM

Type of Rooms

- 69 Economy Rooms
- 142 Standard Rooms
- 48 Japanese Style Rooms
- 10 Deluxe Rooms
- 3 Suites
- 12 Floors
- Total 272 Guest Rooms

Check-In 3:00 PM

Check-Out 10:00

Early Check-In & Late-Out Available



ラフォーレ琵琶湖 LAFORET BIWAKO

GUEST ROOM



Deluxe Room



Standard Room



Japanese Room

Total Capacity
272 Rooms
882 Guests

At the Laforet Biwako, you have a choice of accommodations to match your vacation and the meeting needs. Our spacious 272 guest rooms and suites filled with high ceilings, large windows and high speed internet access. (6th and 10th floors only)

ラフォーレ琵琶湖 LAFORET BIWAKO

GUEST ROOM

Standard Room

・2～3Guests(30m²)

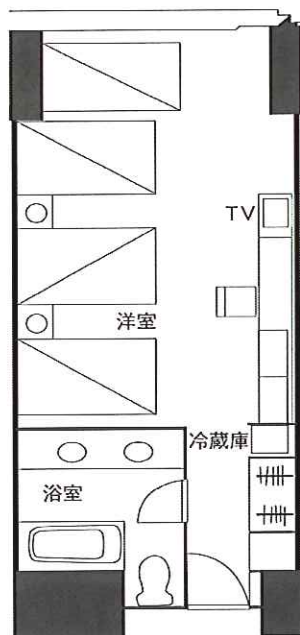
Garden View

65 Rooms

・3～4Guests(40m²)

Lake View

77 Rooms



Our standard rooms have both garden and lake view which provide comfort and feeling of relaxation.

ラフォーレ琵琶湖 LAFORET BIWAKO

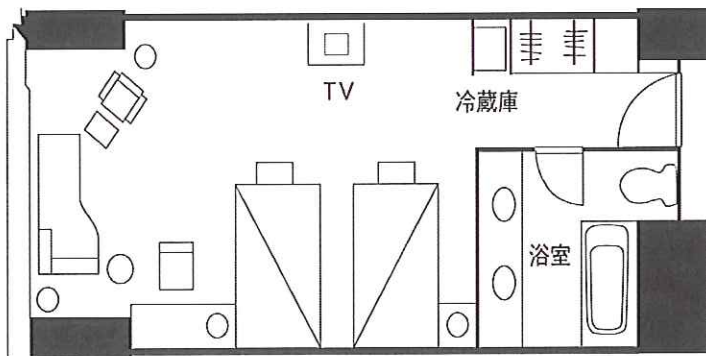
GUEST ROOM

Deluxe Room

・2 Guests(40m²)

Lake View

10 Rooms



Deluxe room is designed for a your comfortable stay with overstuffed sofas, ottomans and comfortable beds.

ラフォーレ琵琶湖 LAFORET BIWAKO

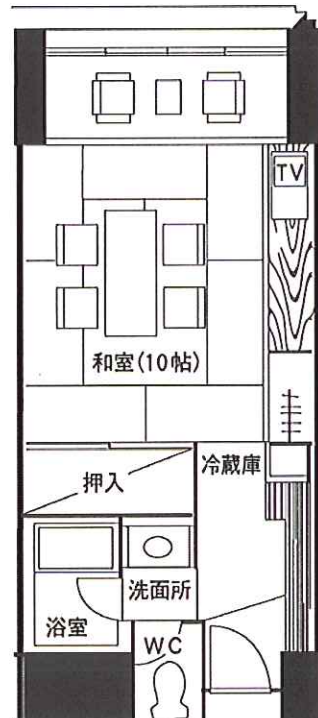
GUEST ROOM

Japanese Room

・3～4 Guests(40m²)

Lake View

48 Rooms



Japanese style room is furnished with “Tatami” which is a traditional type of Japanese flooring, and a bathroom with separate bath and shower.

ラフォーレ琵琶湖 LAFORET BIWAKO

MEETING

Stay Laforet, Use Free!

- Slide and OHPs
- Copy white board
- Laser pointer
- Microphone
- CD player
- Codeless phone
- Meeting room



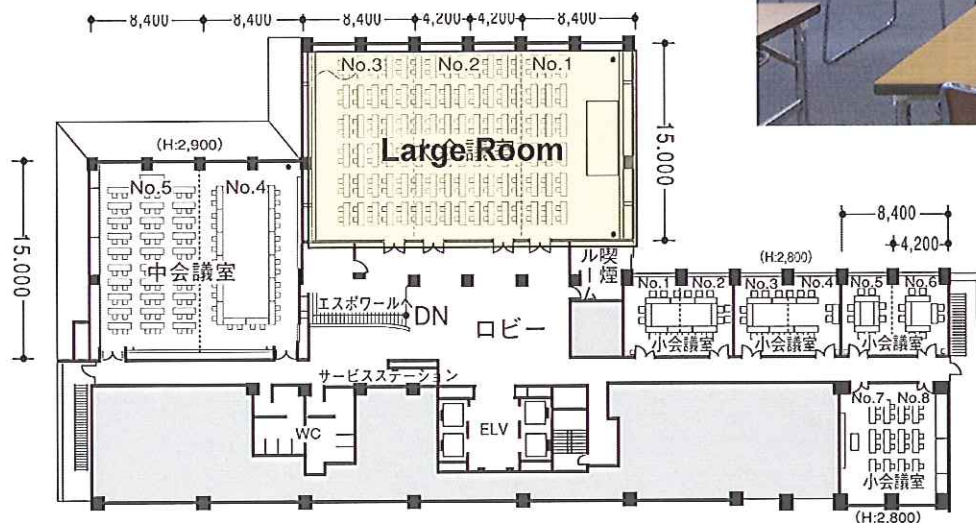
ラフォーレ琵琶湖

LAFORET BIWAKO

MEETING

Large Room CAPACITY

| | Use | Dimensions | | |
|-------|-----|------------|------|-----------------|
| | | m² | ft.2 | person ✕max. |
| ① ~ ③ | all | 378 | 4069 | 270 |
| ① | 2/3 | 252 | 2713 | 144 |
| ② | 1/2 | 189 | 2034 | 108 |
| ③ | 1/3 | 126 | 1356 | 72 |



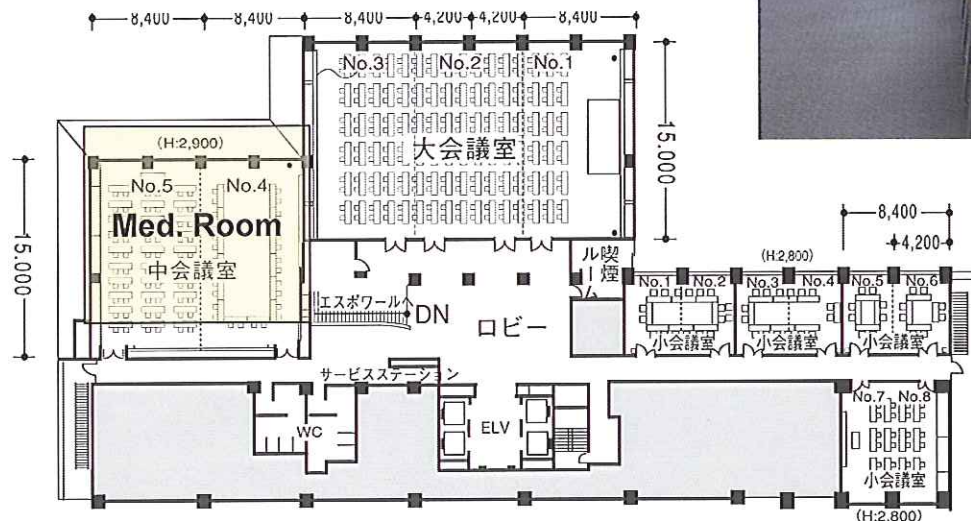
The largest room can hold about 270 participants maximum, only When the size of table is 1800mm × 450mm and 3 chairs on each table.

ラフォーレ琵琶湖 LAFORET BIWAKO

MEETING

Medium Room CAPACITY

| | Use | Dimensions | | |
|----|-----|------------|------|-----------------|
| | | m² | ft.2 | person ※max. |
| ④⑤ | all | 230 | 2476 | 144 |
| ⑤ | 1/2 | 126 | 1356 | 72 |



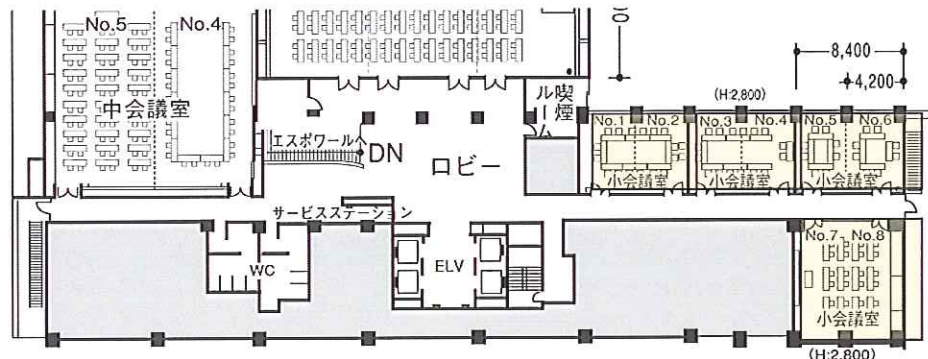
The medium room can hold about 144 participants maximum, only When the size of table is 1800mm × 450mm and 3 chairs on each table.

ラフォーレ琵琶湖 LAFORET BIWAKO

MEETING

Small Room CAPACITY

| | Use | Dimensions | | |
|-------|-----|------------|------|------------------|
| | | m² | ft.2 | person × max. |
| ①② | all | 50 | 598 | 24 |
| ① | 1/2 | 25 | 269 | 12 |
| ③④ | all | 50 | 598 | 24 |
| ③ | 1/2 | 25 | 269 | 12 |
| ⑤⑥ | all | 50 | 598 | 24 |
| ⑤ | 1/2 | 25 | 269 | 12 |
| ⑦⑧ | all | 71 | 764 | 36 |
| ⑨ ~ ⑫ | all | 56 | 645 | 24 |



We have 12 small different rooms which can be flexibly connected and hold about 24-36 participants maximum, only When the size of table is 1800mm × 450mm and 3 chairs on each table.

ラフォーレ琵琶湖

LAFORET BIWAKO

HEALTH&FITNESS

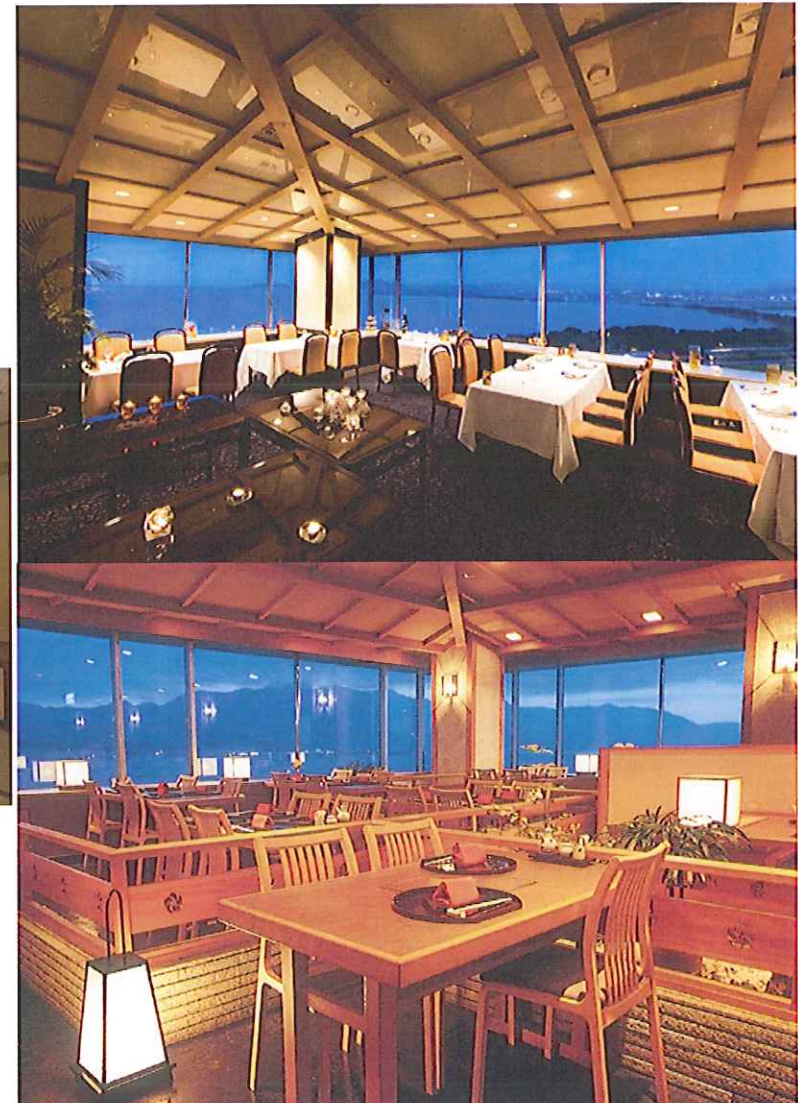


- Golf practice area
- Gymnastic hall
- Football ground
- Tennis court
- Indoor swimming pool
- Sport bath & Sauna



ラフォーレ琵琶湖 LAFORET BIWAKO

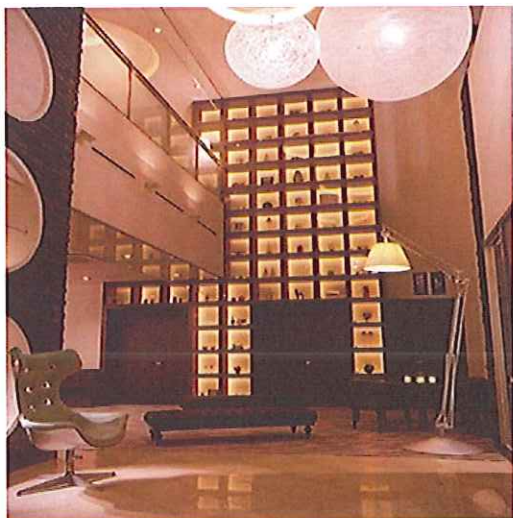
DINING



There are two restaurants
One is Japanese ,the other is
Western style
We also have private rooms and cafe

ラフォーレ琵琶湖 LAFORET BIWAKO

WEDDING BANQUET



The concept of our wedding is modern New York style. In addition, some furniture are from SOHO NY.

ラフォーレ琵琶湖 LAFORET BIWAKO

FACILITIES



We have...
Gift Shop
Laundry machine
Planetarium



Our planetarium system can project as many as five million fixed stars, including those that are invisible to the naked eye.

Please refer to the latest information
at USD9 Homepage

ラフォーレ琵琶湖 LAFORET BIWAKO

ACCESS



Travel Time from International Airports

Osaka International Airport.....1hour
Kansai International Airport...1hour25minutes
Chubu International Airport...1hour45minutes

Travel Time from Main Cities (by Train)

Kyoto.....28minutes
Osaka.....37minutes
Kobe.....1hour
Nagoya.....1hour
Tokyo.....2hours40minutes

